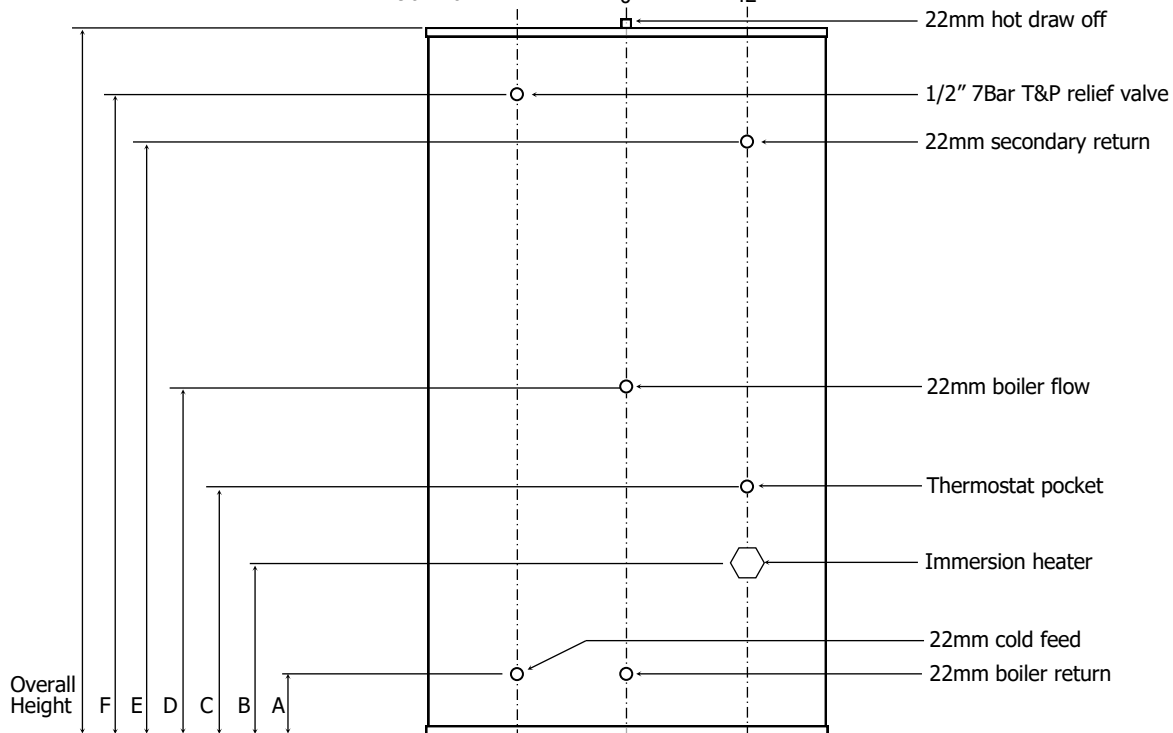


Technical Data Sheet

Tempest Indirect

400-500L	32°	0°	32°
200-300L	38°	0°	38°
90-170L	42°	0°	42°



All unvented cylinders come with an unvented component kit to suit.

Capacity (L)	90	125	150	170	200	250	300	400	500
Height (mm)	750	935	1060	1200	1120	1330	1650	1590	1835
Diameter (mm)	510	510	510	510	580	580	580	710	710
A (mm)	170	170	170	170	195	195	195	240	240
B (mm)	200	200	200	200	225	225	225	270	270
C (mm)	400	400	400	450	475	555	555	640	640
D (mm)	495	495	495	600	625	825	845	1240	890
E (mm)	-	-	-	-	815	975	1255	1240	1390
F (mm)	550	750	880	1030	930	1140	1435	1340	1590

Capacity (L)	90	125	150	170	200	250	300	400	500
Reheat from cold (minutes)	26	36	37	36	33	35	40	45	50
Reheat from 70% draw-off (minutes)	18	25	6	25	24	25	29	35	40
ERP Band	C	C	C	C	C	C	C	C	C
Immersion Rating (kw)	3	3	3	3	3	3	3	3	3
Standing Heat Loss (kwh/24hrs)	1.37	1.48	1.72	1.92	2.04	2.16	2.32	2.58	2.81



T: 01952 257961
F: 01952 253452

E: sales@telford-group.com
W: www.telford-group.com